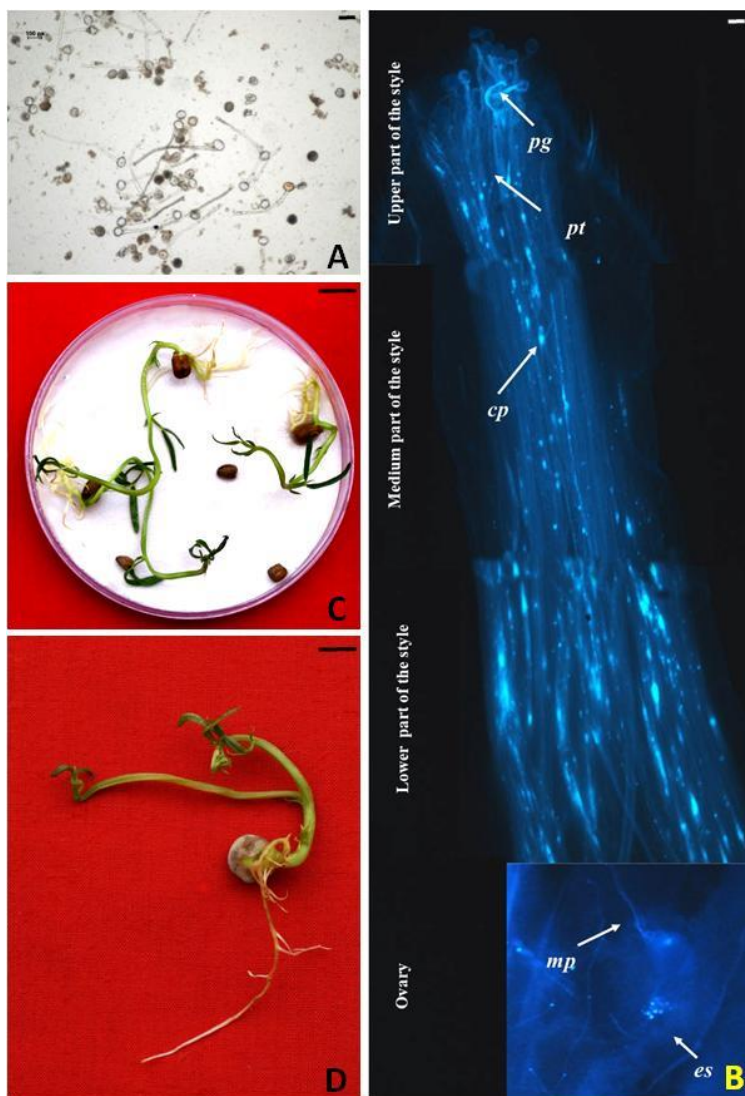


Supplementary Fig 1 Effect of different storage temperatures and duration on storage of desiccated pollen at LAF for 10 min (Ratan).



Supplementary Fig 1 (A) *In vitro* pollen germination of *Lathyrus sativus* (Ratan) on Brewbaker and Kwack medium supplemented with 15% sucrose; Scale bar, 200 μ m.

(B) Fertilizing ability of cryopreserved pollen on receptive stigma using fluorescence microscopy; pg, pollen germination; pt, pollen tube growth; mp, micropyle; es, embryo sac; Scale bar, 200 μ m.

(C) Germination of seeds obtained through pollination with cryopreserved pollen; Scale bar, 1 cm (D) Seedlings obtained through pollination with cryopreserved pollen; Scale bar, 1 cm.