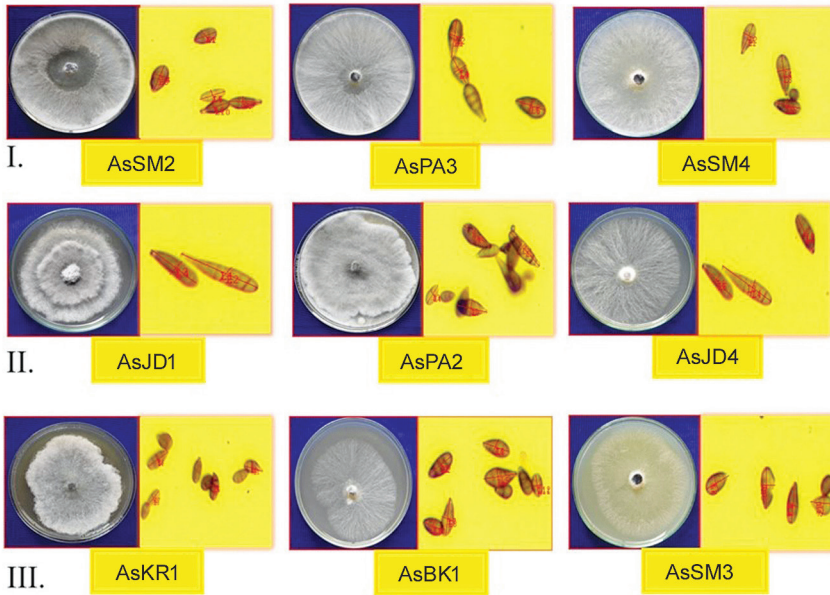
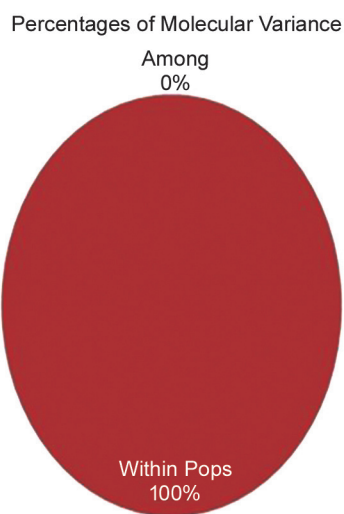


(A)



(B)

Supplementary Fig. 1 (A) Disease severity scale of *Alternaria sesami* and (B) Cultural, morphological and spore variability of *Alternaria sesami* I. Highest growing isolates and their spores; II. Moderately growing isolates and their spores; III. Slowest-growing isolates and their spores.



Supplementary Fig. 2 Analysis of molecular variance (AMOVA) 100% genetic variation within a population and no genetic variation among the population.