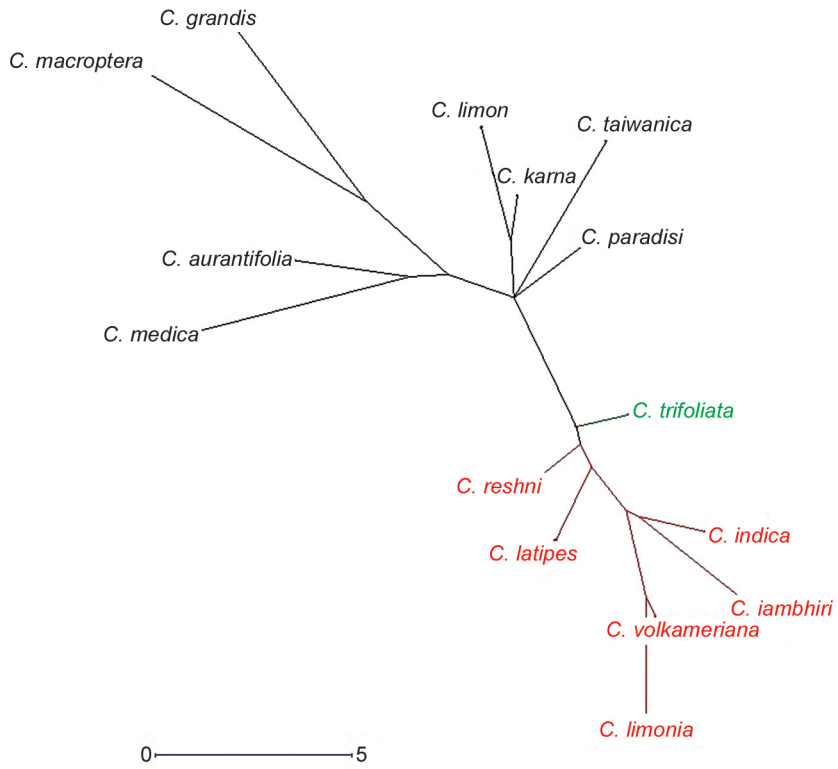


Supplementary Table 1 Principal component analysis for germination and seedling growth of different potential citrus rootstocks

Characters	PC-I	PC-II	PC-III	PC-IV	PC-V
Seed weight (g)	0.459	-0.459	0.525	-0.379	-0.030
Seed length (mm)	0.246	-0.281	0.796	0.055	0.047
Seed width (mm)	0.128	0.169	0.879	0.042	0.229
Seed thickness (mm)	-0.103	0.085	0.883	-0.002	0.017
Days to germination	0.137	-0.022	0.047	0.091	0.727
Germination (%)	0.142	0.753	-0.057	-0.326	0.260
Plant height 60 DAS (cm)	0.738	-0.181	0.151	-0.332	0.000
Plant height 90 DAS (cm)	0.812	0.114	0.161	0.335	0.152
Leaf number 60 DAS	0.741	0.251	-0.060	0.207	-0.063
Leaf number 90 DAS	0.806	0.274	0.076	0.176	0.190
Plant fresh weight 60 DAS (g)	0.839	0.134	0.051	-0.277	-0.127
Plant fresh weight 90 DAS (g)	0.835	-0.313	-0.113	0.040	0.073
Plant dry weight 60 DAS (g)	0.823	0.232	0.116	-0.282	-0.072
Plant dry weight 90 DAS (g)	0.878	-0.101	0.091	0.106	-0.009
Chlorophyll content (SPAD)	0.122	-0.317	-0.096	-0.209	-0.713
Germination speed index	0.058	0.889	-0.216	0.014	-0.086
Mean daily germination	0.040	0.936	-0.024	-0.174	0.088
Mean germination time	-0.089	-0.474	0.366	-0.240	0.597
Peak value	0.026	0.894	0.129	0.213	0.021
Germination value	0.033	0.944	0.105	0.103	-0.021
Annual growth rate	0.398	0.290	0.064	0.696	0.189
Relative growth rate	-0.165	-0.410	0.005	0.673	0.126
Proportion of variance	0.282	0.233	0.126	0.091	0.054
Cumulative proportion	0.281	0.515	0.641	0.732	0.787
Total eigen values	6.200	5.133	2.771	2.001	1.206

DAS, Days after sowing.



Supplementary Fig. 1 Phylogenetic relationship among different potential citrus rootstocks based on germination and seedling growth behaviours.