

Supplementary Table 1 Reference sequences of different *Colletotrichum* spp. retrieved from NCBI for construction of multigene phylogenetic tree

S. no.	Species	Accession code	Host	Country	GenBank accession number					Reference	
					ITS	ACT	TUB2	GD	SOD2		CAL
1	<i>Glomerella cingulate</i> f.sp. <i>camelliae</i>	ICMP10643	<i>Camellia</i> × <i>williamsii</i>	UK	JX010224	JX009540	JX010436	JX009908	JX010358	JX009630	Weir et al. (2012)
2	<i>Glomerella cingulate</i> f.sp. <i>camelliae</i>	ICMP18542	<i>Camellia sasanqua</i>	USA	JX010223	JX009488	JX010429	JX009994	JX010357	JX009628	Weir et al. (2012)
3	<i>Glomerella cingulate</i> f.sp. <i>camelliae</i>	ICMP10646	<i>Camellia sasanqua</i>	USA	JX010225	JX009563	JX010437	JX009993	JX010359	JX009629	Weir et al. (2012)
4	<i>C. tropicale</i>	ICMP18672	<i>Litchi chinensis</i>	Japan	JX010275	JX009480	JX010396	JX010020	JX010318	JX009722	Weir et al. (2012)
5	<i>C. asianum</i>	ICMP18696	<i>Mangifera indica</i>	Australia	JX010192	JX009576	JX010384	JX009915	JX010306	JX009723	Weir et al. (2012)
6	<i>C. gloeosporioides</i>	ICMP12939	<i>Citrus</i> spp.	New Zealand	JX010149	JX009462	-	JX009931	-	-	Weir et al. (2012)
7	<i>C. gloeosporioides</i>	ICMP18694	<i>Mangifera indica</i>	South Africa	JX010155	JX009481	-	JX009980	-	-	Weir et al. (2012)
8	<i>C. gloeosporioides</i>	ICMP18695	<i>Citrus</i> spp.	USA	JX010153	JX009494	-	JX009979	-	-	Weir et al. (2012)
9	<i>C. gloeosporioides</i>	ICMP18697	<i>Vitis vinifera</i>	USA	JX010154	JX009557	-	JX009987	-	-	Weir et al. (2012)
10	<i>C. gloeosporioides</i>	ICMP19121 CBS273.51	<i>Citrus limon</i>	Italy	JX010148	JX009558	-	JX010054	-	-	Weir et al. (2012)
11	<i>C. kahawae</i> subsp. <i>Ciggaro</i>	ICMP17922	<i>Hypericum perforatum</i>	Germany	JX010238	JX009450	JX010432	JX010042	JX010355	JX009636	Weir et al. (2012)
12	<i>C. musae</i>	ICMP7817	<i>Musa sapientum</i>	Kenya	JX010142	JX009432	JX010395	JX010015	JX010317	JX009689	Weir et al. (2012)
13	<i>C. psidii</i>	ICMP19120	<i>Psidium</i> spp.	Italy	JX010219	JX009515	JX010443	JX009967	JX010366	JX009743	Weir et al. (2012)
14	<i>C. queenslandicum</i>	ICMP18705	<i>Coffea</i> spp.	Fiji	JX010185	JX009490	JX010412	JX010036	JX010334	JX009694	Weir et al. (2012)
15	<i>C. siamense</i>	ICMP17795	<i>Malus domestica</i>	USA	JX010162	JX009506	JX010393	JX010051	JX010315	JX009703	Weir et al. (2012)
16	<i>C. siamense</i>	ICMP18574	<i>Pistacia vera</i>	Australia	JX010270	JX009535	JX010391	JX010002	JX010313	JX009707	Weir et al. (2012)
17	<i>C. siamense</i>	ICMP12567	<i>Persea americana</i>	Australia	JX010250	JX009541	JX010387	JX009940	JX010309	JX009697	Weir et al. (2012)
18	<i>C. theobromicola</i>	ICMP17895	<i>Annona diversifolia</i>	Mexico	JX010284	JX009568	JX010382	JX010057	JX010304	JX009600	Weir et al. (2012)
19	<i>C. theobromicola</i>	ICMP17927 CBS142.31	<i>Fragaria</i> × <i>ananassa</i>	USA	JX010286	JX009516	JX010373	JX010024	JX010295	JX009592	Weir et al. (2012)
20	<i>C. theobromicola</i>	ICMP17957 CBS124251	<i>Sylosanthus viscosa</i>	Australia	JX010289	JX009575	JX010380	JX009962	JX010302	JX009597	Weir et al. (2012)
21	<i>C. fruticola</i> syn. <i>Glomerella cingulate</i> var. <i>minor</i>	CBS238.49 ICMP17921	<i>Ficus edulis</i>	Germany	JX010181	JX009495	JX010400	JX009923	JX010322	JX009671	Weir et al. (2012)

Contd.

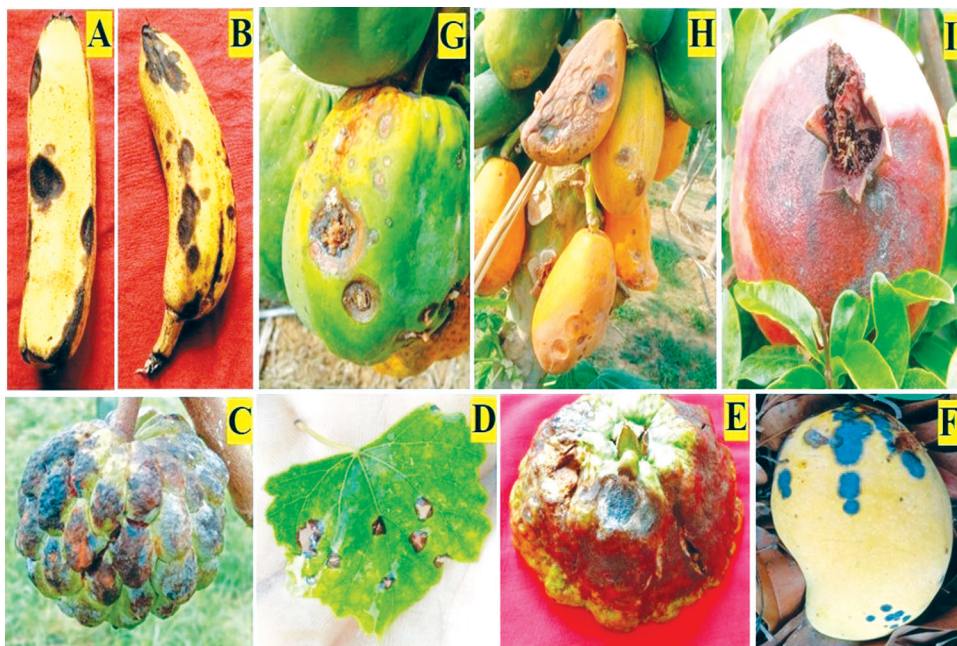
Supplementary Table 1 (Continued)

S. no.	Species	Accession code	Host	Country	GenBank accession number					Reference	
					ITS	ACT	TUB2	GD	SOD2		CAL
22	<i>C. fruticola</i>	CBS130416 ICMP18581	<i>Coffea arabica</i>	Thailand	JX010165	FJ907426	JX010405	JX010033	JX010327	FJ917508	Weir et al. (2012)
23	<i>C. fruticola</i> syn. <i>C. ignotum</i>	CBS125397 ICMP18646	<i>Tetragastris panamensis</i>	Panama	JX010173	JX009581	JX010409	JX010032	JX010331	JX009674	Weir et al. (2012)
24	<i>C. nupharicola</i>	CBS470.96 ICMP18187	<i>Nuphar lutea</i> sub sp. <i>polysepala</i>	USA	JX010187	JX009437	JX010398	JX009972	JX010320	JX009663	Weir et al. (2012)
25	<i>C. alienum</i>	ICMP12071	<i>Malus domestica</i>	New Zealand	JX010251	JX009572	JX010411	JX010028	JX010333	JX009654	Weir et al. (2012)
26	<i>C. musae</i>	CBS116870 ICMP19119	<i>Musa</i> spp.	USA	JX010146	JX009433	HQ596280	JX010050	JX010335	JX009742	Weir et al. (2012)
27	<i>C. aenigma</i>	ICMP18608	<i>Persea americana</i>	Israel	JX010244	JX009443	JX010389	JX010044	JX010311	JX009683	Weir et al. (2012)
28	<i>C. siamense</i>	ICMP18578 CBS130417	<i>Coffea arabica</i>	Thailand	JX010171	FJ907423	JX010404	JX009924	JX010326	FJ917505	Weir et al. (2012)
29	<i>C. siamense</i> syn. <i>C. hymenocallidis</i>	CBS125378 ICMP18642	<i>Hymenocallis americana</i>	China	JX010278	JQ856775	JX010410	JX010019	JX010332	JX009709	Weir et al. (2012)
30	<i>C. siamense</i> syn. <i>C. jasmini-sambac</i>	CBS130420 ICMP19118	<i>Jasminum sambac</i>	Vietnam	HM131511	HM131507	JX010415	HM131497	JX010337	JX009713	Weir et al. (2012)
31	<i>C. aeshynomenes</i>	ICMP17673	<i>Aeshynomene virginica</i>	USA	JX010176	JX009489	JX010392	JX009930	JX010314	JX009721	Weir et al. (2012)
32	<i>C. tropicale</i>	CBS124949 ICMP18653	<i>Theobroma cocoa</i>	Panama	JX010264	JX009483	JX010407	JX010007	JX010329	JX009719	Weir et al. (2012)
33	<i>C. queenslandicum</i>	ICMP1778	<i>Carica papaya</i>	Australia	JX010276	JX009447	JX010414	JX009934	JX010336	JX009691	Weir et al. (2012)
34	<i>C. salsolae</i>	ICMP19051	<i>Salsola targus</i>	Hungary	JX010242	JX009562	JX010403	JX009916	JX010325	JX009696	Weir et al. (2012)
35	<i>C. asiamum</i>	CBS130418 ICMP18580	<i>Coffea arabica</i>	Thailand	FJ972612	JX009584	JX010406	JX010053	JX010328	FJ917506	Weir et al. (2012)
36	<i>C. gloeosporioides</i>	CBS112999 ICMP17821	<i>Citrus sinensis</i>	Italy	JX010152	JX009531	JX010445	JX010056	JX010365	JX009731	Weir et al. (2012)
37	<i>C. alatae</i>	CBS304.67 ICMP17919	<i>Dioscorea alata</i>	India	JX010190	JX009471	JX010383	JX009990	JX010305	JX009738	Weir et al. (2012)
38	<i>C. truncatum</i>	CBS151.35	<i>Phaseolus lunatus</i>	USA	GU227862	GU227960	GU228156	GU228254	-	-	Damm et al. (2009)

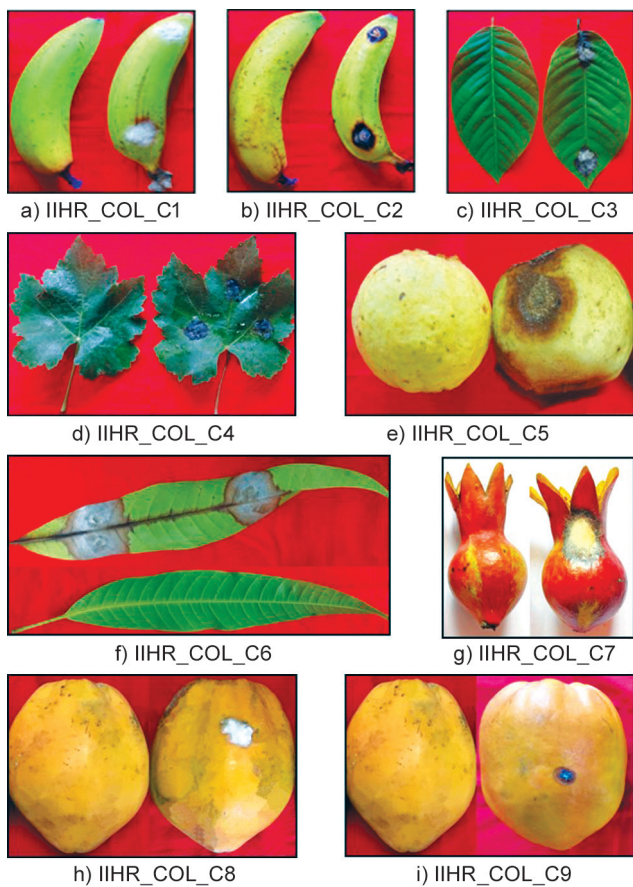
Contd.

Supplementary Table 1 (Concluded)

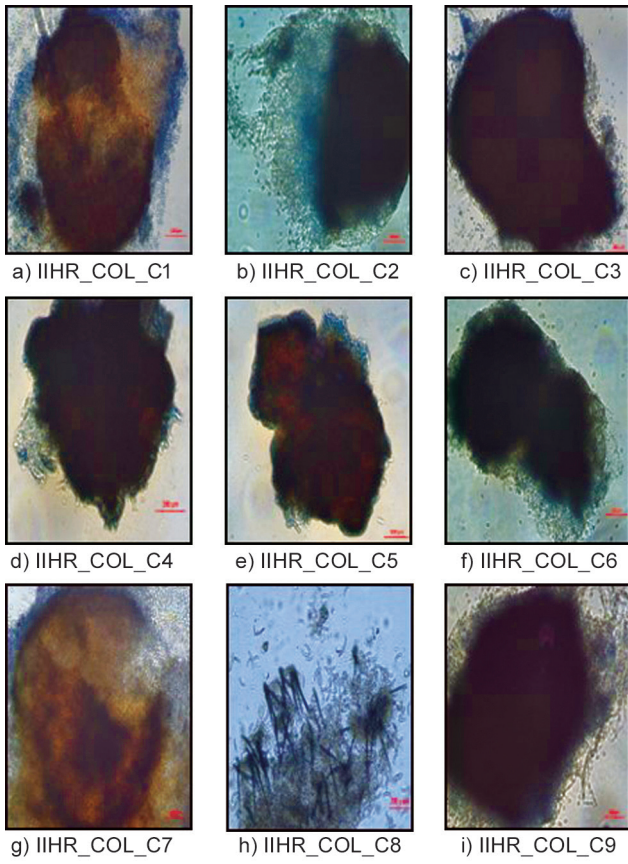
S. no.	Species	Accession code	Host	Country	GenBank accession number							Reference
					ITS	ACT	TUB2	GD	SOD2	CAL		
39	<i>C. truncatum</i>	CBS195.32	<i>Glycine max</i>	USA	GU227865	GU227963	GU228159	GU228257	-	-	-	Damm <i>et al.</i> (2009)
40	<i>C. truncatum</i>	CBS669.71	<i>Medicago sativa</i>	Israel	GU227868	GU227966	GU228162	GU228260	-	-	-	Damm <i>et al.</i> (2009)
41	<i>C. truncatum</i>	CBS112998	<i>Arachis hypogea</i>	Gambia	GU227869	GU227967	GU228163	GU228261	-	-	-	Damm <i>et al.</i> (2009)
42	<i>C. truncatum</i>	CBS141.79	<i>Stylosanthes hamata</i>	Australia	GU227873	GU227971	GU228167	GU228265	-	-	-	Damm <i>et al.</i> (2009)
43	<i>C. truncatum</i>	CBS120709	<i>Capsicum frutescens</i>	India	GU227877	GU227975	GU228171	GU228269	-	-	-	Damm <i>et al.</i> (2009)
44	<i>C. truncatum</i>	CBS371.67	<i>Capsicum annuum</i>	India	GU227880	GU227978	GU228174	GU228272	-	-	-	Damm <i>et al.</i> (2009)
45	<i>C. truncatum</i>	IMI63597	<i>Peperomia magnolifolia</i>	India	GU227886	GU227984	GU228180	GU228278	-	-	-	Damm <i>et al.</i> (2009)
46	<i>C. truncatum</i>	CB125327	<i>Bougainvillea spp.</i>	Netherlands	GU227887	GU227985	GU228181	GU228279	-	-	-	Damm <i>et al.</i> (2009)
47	<i>C. truncatum</i>	CBS127.57	<i>Peperomia magnolifolia</i>	India	GU227888	GU227986	GU228182	GU228280	-	-	-	Damm <i>et al.</i> (2009)



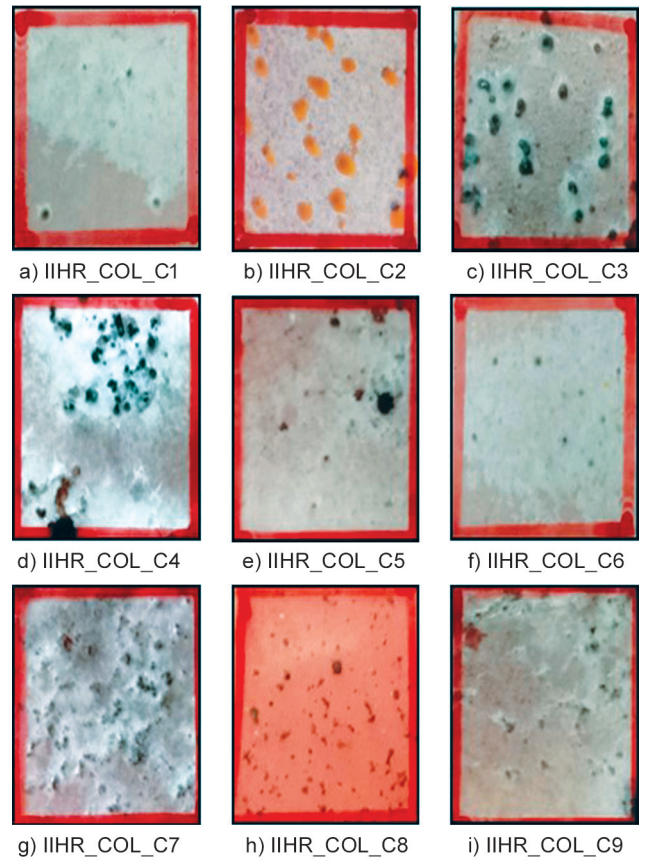
Supplementary Fig. 1 Field symptoms of anthracnose observed on tropical fruit crops from which isolations were made; A, B, Banana Anthracnose; C, Custard Apple Anthracnose; D, Grape Anthracnose; E, Guava Anthracnose; F, Mango Anthracnose; G, H, Papaya Anthracnose; I, Pomegranate Anthracnose.



Supplementary Fig. 2 Pathogenicity of isolates of *Colletotrichum* spp. on fruit crops.



Supplementary Fig. 3 Morphology of acervuli of *Colletotrichum* isolates (100 × magnification).



Supplementary Fig. 4 Production of acervuli by the isolates of *Colletotrichum* spp. on culture medium.