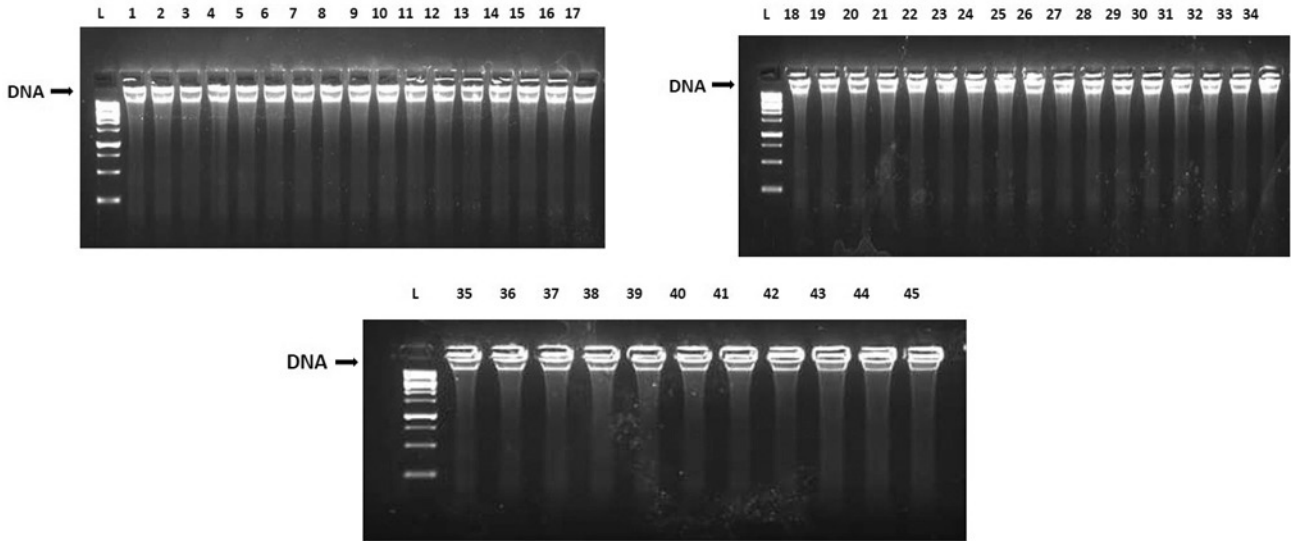


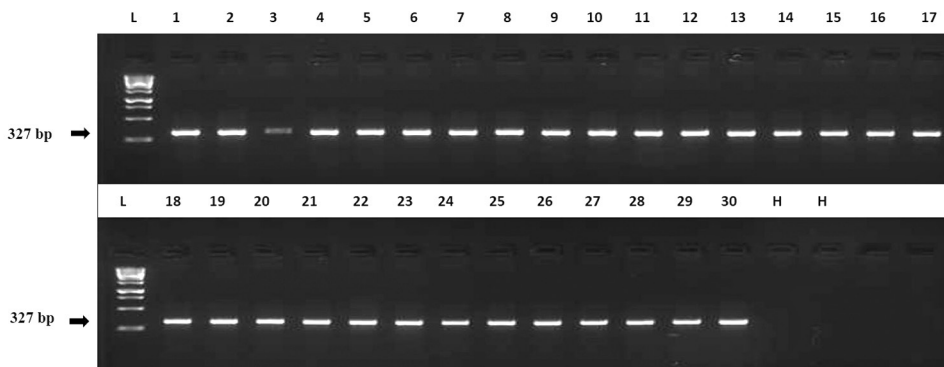
Supplementary Table 1 DNA extraction using a modified method from okra samples showing enation leaf curl virus symptoms in major Indian hotspots regions

Sample Sl. No	Sample code	Symptoms Observed	Location	DNA extracted by modified method		
				Concentration (ng/ μ L)*	Ratio (A260/A280)*	Ratio (A260/A230)*
1.	DEL-01	LT, PT	New Delhi	1370	1.86	1.92
2.	DEL-02	DLLS	New Delhi	1507.5	1.76	1.84
3.	DEL-03	UC	New Delhi	1499.2	1.83	1.91
4.	DEL-04	DLLS	New Delhi	1554.2	1.76	1.90
5.	DEL-05	UC	New Delhi	1521.0	1.80	1.91
6.	DEL-06	LT	New Delhi	1497.9	1.83	1.92
7.	DEL-07	UC, VT	New Delhi	1497.9	1.83	1.88
8.	DEL-08	DLLS	New Delhi	1521.7	1.81	1.87
9.	HY-01	SB	Hyderabad	1494.8	1.80	1.88
10.	HY-02	SB	Hyderabad	1494.9	1.76	1.82
11.	HY-03	UC, VT	Hyderabad	1324.3	1.76	1.82
12.	HY-04	UC	Hyderabad	1356.6	1.76	1.84
13.	HY-05	UC	Hyderabad	1654.7	1.82	1.85
14.	HY-06	SB	Hyderabad	1456.4	1.82	1.86
15.	HY-07	SB	Hyderabad	1456	1.81	1.87
16.	HY-08	VT	Hyderabad	1434.9	1.80	1.88
17.	RAI-01	SB	Raipur	1556	1.82	1.79
18.	RAI-02	DLLS	Raipur	1345.4	1.81	1.76
19.	RAI-03	LT, PT	Raipur	1357.6	1.76	1.81
20.	RAI-04	UC	Raipur	1567.3	1.75	1.84
21.	RAI-05	LT	Raipur	1667.5	1.73	1.83
22.	RAI-06	PT	Raipur	1333.3	1.72	1.65
23.	RAI-07	LT, PT	Raipur	1456.5	1.75	1.76
24.	RAI-08	PT	Raipur	1678.6	1.73	1.77
25.	SO-01	UC	Sonipat	1346.2	1.74	1.93
26.	SO-02	SB	Sonipat	1376.7	1.77	1.92
27.	SO-03	UC	Sonipat	1345.8	1.80	1.89
28.	SO-04	LT, PT	Sonipat	1435.7	1.81	1.87
29.	SO-05	UC	Sonipat	1432.9	1.82	1.69
30.	SO-06	DLLS	Sonipat	1456.1	1.83	1.83
31.	SO-07	LT, PT	Sonipat	1544.5	1.84	1.90
32.	SO-08	SB	Sonipat	1555.6	1.81	1.88
33.	PA-01	LT, PT	Panipat	1663.7	1.80	1.69
34.	PA-02	VT	Panipat	1445.9	1.82	1.84
35.	PA-03	PT	Panipat	1324	1.83	1.85
36.	PA-04	UC	Panipat	1342.5	1.82	1.78
37.	PA-05	SB, UC	Panipat	1231.4	1.80	1.88
38.	PA-06	SB, PT	Panipat	1334.3	1.81	1.92
39.	PA-07	DLLS	Panipat	1443.5	1.78	1.81
40.	PA-08	SB	Panipat	1445.6	1.80	1.92
41.	VA-01	PT	Varanasi	1556.7	1.80	1.76
42.	VA-02	VT	Varanasi	1447.2	1.78	1.77
43.	VA-03	UC	Varanasi	1445.4	1.79	1.74
44.	VA-04	SB	Varanasi	1443.5	1.82	1.88
45.	VA-05	UC	Varanasi	1663.3	1.85	1.69

*Mean; UC, Upward curling; VT, Vein thickening; LT, Leaf thickening; PT, Petiole twisting; SB, Stem bending; DLLS, Distorted lower leaf surfaces.



Supplementary Fig. 1 Gel showing genomic DNA from okra leaves using modified protocols.
 Lane L, 1 kb ladder. Lanes 1–45: DNA extracted from okra samples collected from major hotspot regions across India.



Supplementary Fig. 2 PCR validation of okra samples (Lanes 1–30) from major hotspot regions of India using OELCuV-specific primers.
 Lane L: 1 kb ladder; DNA extracted via modified protocol; H: Healthy sample.