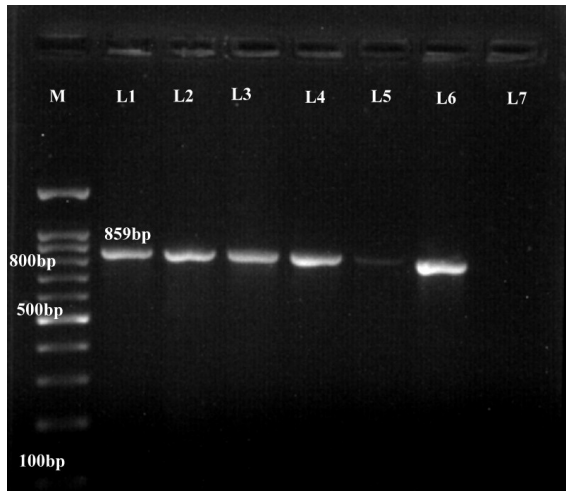


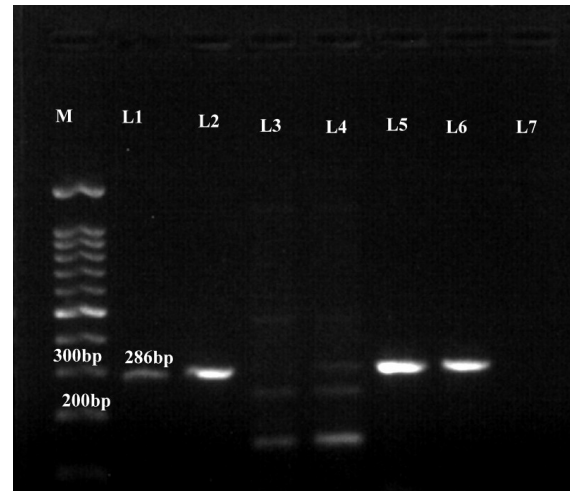


Supplementary Table 2. Genotypic antimicrobial resistance in *E.coli* isolates

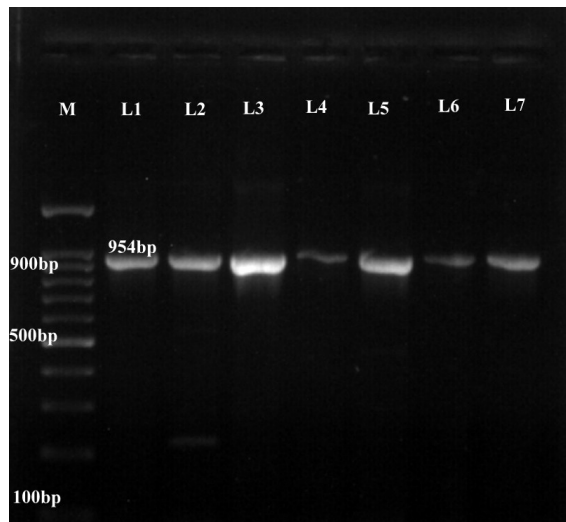
S.No.	Sample ID	<i>blaTEM</i>	<i>tetA</i>	<i>tetC</i>	<i>strA</i>	<i>ere</i>	<i>aac- (IV)-(3)</i>
1.	PB-5	+	+	-	+	-	+
2.	PB-6	+	+	-	-	-	-
3.	PB-7	+	+	-	+	-	-
4.	PB-8	-	+	-	+	+	-
5.	PB-13	-	+	-	+	-	+
6.	PB-14	-	+	-	-	+	+
7.	PB-15	-	-	-	-	-	+
8.	PB-16	-	+	-	-	-	-
9.	PB-17	-	-	-	-	+	-
10.	PB-18	-	-	-	+	+	-
11.	PB-7-B	-	+	-	-	+	-
12.	PB-8-B	-	-	-	+	+	-
13.	PB-9-B	+	-	-	+	+	-
14.	PB-10-B	-	-	-	+	-	-
15.	PB-28	-	-	-	+	+	-
16.	PB-29	-	-	-	+	-	-
17.	PB-31	-	-	-	-	+	+
18.	PB-32	-	-	-	+	+	-
19.	PB-34	-	+	-	+	+	+
20.	PB-35	-	+	-	+	+	-
21.	PB-36	+	+	-	+	+	+
22.	PB-37	+	-	-	+	-	+
23.	PB-38	-	+	-	+	+	-
24.	PB-39	+	+	-	+	-	-
25.	PB-40	+	-	-	+	-	+
26.	PB-41	-	-	-	+	+	+
27.	PB-45	-	+	-	-	-	-
28.	PB-50	+	-	-	+	-	+
29.	PB-51	-	+	-	+	-	-
30.	PB-57	+	-	-	-	+	+
31.	PB-62	-	-	-	+	-	-
32.	PB-63	+	+	-	-	-	-
33.	PB-68	-	-	-	-	+	+
34.	PB-74	-	+	-	-	-	-
35.	PB-88	-	-	-	+	+	-
36.	PB-91	+	-	-	-	-	+
37.	PB-95	+	-	-	-	+	-
38.	PB-100	-	+	-	-	-	+
39.	PB-103	-	-	-	+	-	-
40.	PB-105	-	+	-	-	+	-
	40	13	19	0	24	20	15



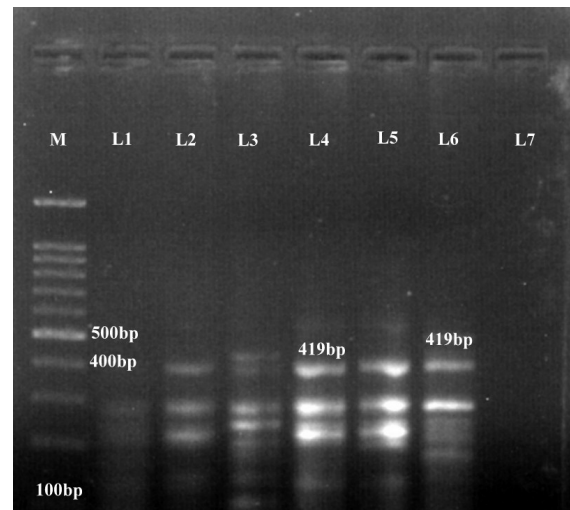
Supplementary Fig. 1. Gel electrophoresis picture of *blaTEM* gene. M-100bp ladder, L1-positive control, L2 to L5-samples, L7-negative control.



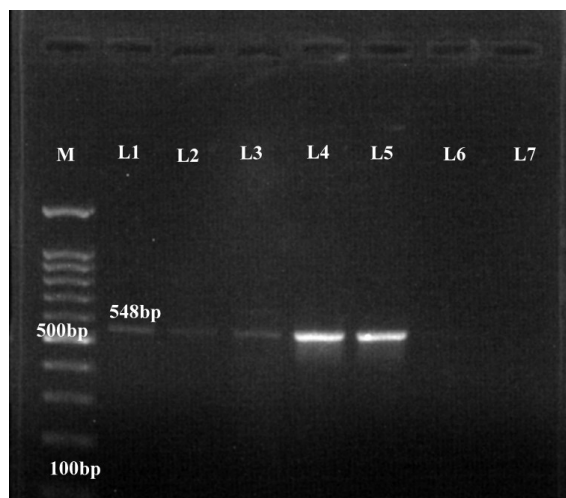
Supplementary Fig. 4. Gel electrophoresis picture of *aac-(3)-IV* antimicrobial gene. M-100bp ladder, L1-positive control, L2 to L6-samples, L7-negative control.



Supplementary Fig. 2. Gel electrophoresis picture of antimicrobial gene *tetA*. M-100bp ladder, L1-positive control, L2 to L6-samples, L7-negative control.



Supplementary Fig. 5. Gel electrophoresis picture of the antimicrobial gene *ere*. M-100bp ladder, L2 to L6-positive samples, L1, L7-negative control.



Supplementary Fig. 3. Gel electrophoresis picture of *strA*. M-100bp ladder, L1-positive control, L2 to L6-samples, L7-negative control.