



## Duplex reverse transcriptase PCR for concurrent detection of porcine astrovirus and porcine kobuvirus

AAKRITI PATHANIA<sup>1</sup>, MANU M<sup>1</sup>, VISHAL MAHAJAN<sup>2</sup> and YASHPAL SINGH MALIK<sup>1,3✉</sup>

*Guru Angad Dev Veterinary and Animal Sciences University, Ludhiana, Punjab, India*

Received: 28 August 2024; Accepted: 06 February 2026

Table 1. Details of Nucleotide Sequences retrieved in the study for PKV (3D gene)

Sr. No.	Accession No.	Strain/Isolate	Positive	Year
1.	KF_814666	Isolate S19	1-451	2012
2.	KF_814665	Isolate S18	1-451	2012
3.	KF_814664	Isolate S16	1-451	2012
4.	KF_814663	Isolate S6	1-454	2012
5.	KF_814662	Isolate S4	1-454	2012
6.	KF_814661	Isolate S1	1-454	2012
7.	MN_196317	Isolate KL-200	1-518	2015

Table 2. Details of known Positive samples (PAstV and PKV)

Sample ID	Diarrhoeic /non-diarrhoeic	Sample Details
P1	Diarrhoeic	Known Positive for both PAstV and PKV
P2	Diarrhoeic	Known Positive for both PAstV and PKV
P3	Diarrhoeic	Known Negative for both PAstV and PKV
P4	Non-diarrhoeic	Known Positive for both PAstV and PKV
P5	Non-diarrhoeic	Known Positive for PKV
P6	Non-diarrhoeic	Known Positive for both PAstV and PKV
P7	Non-diarrhoeic	Known Positive for both PAstV and PKV
P8	Non-diarrhoeic	Known Positive for PKV
P9	Non-diarrhoeic	Known Negative for both PAstV and PKV
P10	Diarrhoeic	Known Positive for both PAstV and PKV
P11	Diarrhoeic	Known Positive for PKV
P12	Diarrhoeic	Known Positive for PKV
P13	Diarrhoeic	Known Positive for PKV
P14	Diarrhoeic	Known Positive for PKV
P15	Non-diarrhoeic	Known Positive for PKV
P16	Non-diarrhoeic	Known Negative for both PAstV and PKV
P17	Non-diarrhoeic	Known Positive for PKV
P18	Diarrhoeic	Known Positive for PKV
P18	Non-diarrhoeic	Known Negative for both PAstV and PKV
P19	Diarrhoeic	Known Negative for both PAstV and PKV
P20	Diarrhoeic	Known Negative for both PAstV and PKV
P21	Non-diarrhoeic	Known Negative for both PAstV and PKV
P22	Diarrhoeic	Known Positive for both PAstV and PKV

Sample ID	Diarrhoeic /non-diarrhoeic	Sample Details
P23	Diarrhoeic	Known Positive for PKV
P24	Diarrhoeic	Known Positive for PKV
P25	Diarrhoeic	Known Positive for PKV
P26	Diarrhoeic	Known Positive for PAsV
P27	Diarrhoeic	Known Positive for PAsV
P28	Diarrhoeic	Known Negative for both PAsV and PKV
P29	Diarrhoeic	Known Negative for both PAsV and PKV
P30	Diarrhoeic	Known Positive for PKV
P31	Diarrhoeic	Known Positive for PKV
P32	Diarrhoeic	Known Positive for PAsV
P33	Diarrhoeic	Known Negative for both PAsV and PKV
P34	Diarrhoeic	Known Negative for both PAsV and PKV
P35	Diarrhoeic	Known Negative for both PAsV and PKV
P36	Diarrhoeic	Known Negative for both PAsV and PKV
P37	Diarrhoeic	Known Negative for both PAsV and PKV
P38	Diarrhoeic	Known Negative for both PAsV and PKV
P39	Diarrhoeic	Known Negative for both PAsV and PKV
P40	Diarrhoeic	Known Negative for both PAsV and PKV
P41	Diarrhoeic	Known Negative for both PAsV and PKV
P42	Diarrhoeic	Known Negative for both PAsV and PKV
P43	Diarrhoeic	Known Negative for both PAsV and PKV
P44	Diarrhoeic	Known Negative for both PAsV and PKV
P45	Diarrhoeic	Known Negative for both PAsV and PKV
P46	Diarrhoeic	Known Negative for both PAsV and PKV
P47	Diarrhoeic	Known Negative for both PAsV and PKV
P48	Diarrhoeic	Known Negative for both PAsV and PKV
P49	Diarrhoeic	Known Negative for both PAsV and PKV
P50	Diarrhoeic	Known Negative for both PAsV and PKV

Table 3. Screened samples result of Duplex PCR (PAsV + PKV)

Sample ID	Diarrhoeic /non-diarrhoeic	PAsV	PKV
P1	Diarrhoeic	Positive	Positive
P2	Diarrhoeic	Positive	Positive
P3	Diarrhoeic	Negative	Negative
P4	Non-diarrhoeic	Positive	Positive
P5	Non-diarrhoeic	Negative	Positive
P6	Non-diarrhoeic	Positive	Positive
P7	Non-diarrhoeic	Positive	Positive
P8	Non-diarrhoeic	Negative	Positive
P9	Non-diarrhoeic	Negative	Negative
P10	Diarrhoeic	Positive	Positive
P11	Diarrhoeic	Negative	Positive
P12	Diarrhoeic	Negative	Positive
P13	Diarrhoeic	Negative	Positive
P14	Diarrhoeic	Negative	Positive
P15	Non-diarrhoeic	Negative	Positive

Sample ID	Diarrhoeic /non-diarrhoeic	PAstV	PKV
P16	Non-diarrhoeic	Negative	Negative
P17	Non-diarrhoeic	Negative	Positive
P18	Diarrhoeic	Negative	Positive
P18	Non-diarrhoeic	Negative	Negative
P19	Diarrhoeic	Negative	Negative
P20	Diarrhoeic	Negative	Negative
P21	Non-diarrhoeic	Negative	Negative
P22	Diarrhoeic	Positive	Positive
P23	Diarrhoeic	Negative	Positive
P24	Diarrhoeic	Negative	Positive
P25	Diarrhoeic	Negative	Positive
P26	Diarrhoeic	Positive	Negative
P27	Diarrhoeic	Positive	Negative
P28	Diarrhoeic	Negative	Negative
P29	Diarrhoeic	Negative	Negative
P30	Diarrhoeic	Negative	Positive
P31	Diarrhoeic	Negative	Positive
P32	Diarrhoeic	Positive	Negative
P33	Diarrhoeic	Negative	Negative
P34	Diarrhoeic	Negative	Negative
P35	Diarrhoeic	Negative	Negative
P36	Diarrhoeic	Negative	Negative
P37	Diarrhoeic	Negative	Negative
P38	Diarrhoeic	Negative	Negative
P39	Diarrhoeic	Negative	Negative
P40	Diarrhoeic	Negative	Negative
P41	Diarrhoeic	Negative	Negative
P42	Diarrhoeic	Negative	Negative
P43	Diarrhoeic	Negative	Negative
P44	Diarrhoeic	Negative	Negative
P45	Diarrhoeic	Negative	Negative
P46	Diarrhoeic	Negative	Negative
P47	Diarrhoeic	Negative	Negative
P48	Diarrhoeic	Negative	Negative
P49	Diarrhoeic	Negative	Negative
P50	Diarrhoeic	Negative	Negative

Table 4. Co-infection of PAstV and PKV in porcine field samples

Sample ID	PAstV-799	PKV
P 1	Positive	Positive
P 2	Positive	Positive
P 4	Positive	Positive
P 6	Positive	Positive
P 7	Positive	Positive
P 10	Positive	Positive
P 22	Positive	Positive

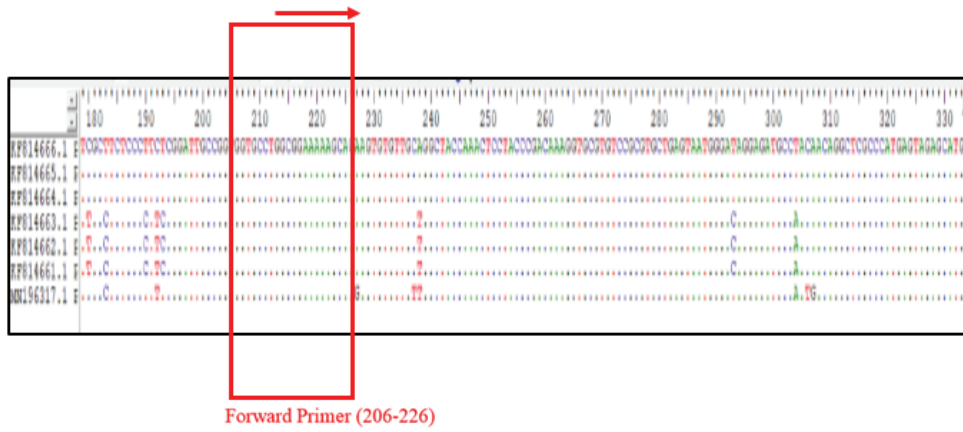


Fig.1 Sequence alignment Conservation dot plot (PKV Forward Primer (3-D gene))

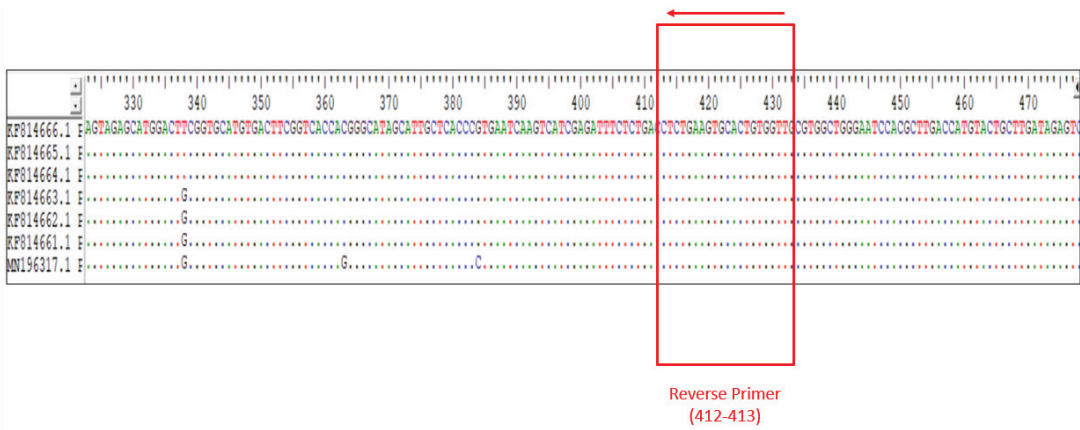


Fig. 2 Sequence alignment Conservation dot plot (PKV Reverse Primer (3-D gene))