



Enzyme histochemistry of uterine tube of buffalo during follicular and luteal phase: A seasonal variation

TULUMONI SEAL¹, ANURADHA GUPTA¹✉, VARINDER UPPAL¹, DEVENDRA PATHAK¹
 and NEELAM BANSAL¹

Guru Angad Dev Veterinary and Animal Sciences University, Ludhiana, Punjab 141 004

Received: 19 September 2024; Accepted: 13 December 2024

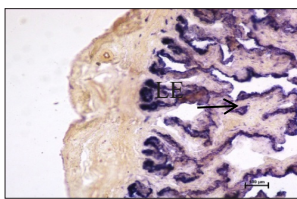


Fig. 1(A). Intense reaction in the lining epithelium (LE) of infundibulum (winter luteal phase). Azo dye method ×100

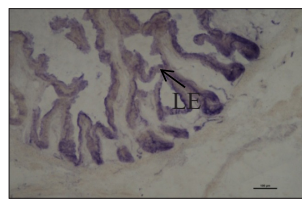


Fig. 1(B). Strong reaction in the lining epithelium (LE) of infundibulum (summer luteal phase). Azo dye method ×100

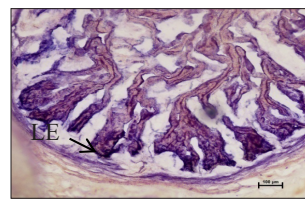


Fig. 2(A). Strong to intense reaction in the lining epithelium (LE) and epithelium of pseudoglands (PG) of ampulla (winter follicular phase). Azo dye method ×100

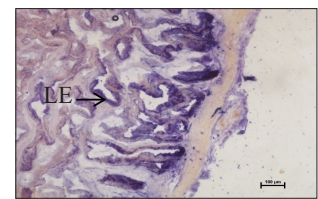


Fig. 2(B). Strong reaction in the lining epithelium (LE) of ampulla (summer follicular phase). Azo dye method ×100

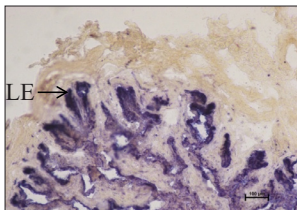


Fig. 1(C). Strong to intense reaction in the lining epithelium (LE) of infundibulum (winter follicular phase). Azo dye method ×100

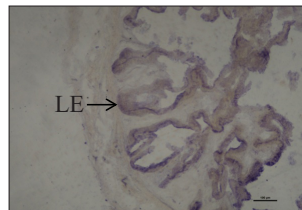


Fig. 1(D). Moderate to strong reaction in the lining epithelium (LE) of infundibulum (summer follicular phase). Azo dye method ×100

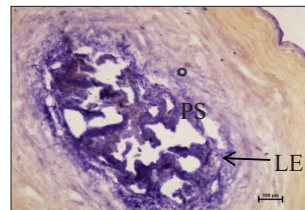


Fig. 2(C). Intense reaction in the lining epithelium (LE) of Isthmus and weak to moderate reaction in the *propria submucosa* (PS) of isthmus (winter luteal phase). Azo dye method ×100

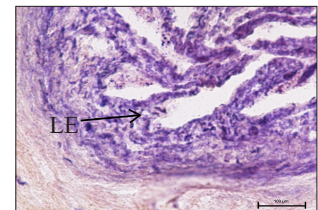


Fig. 2(D). Strong to Intense reaction in the lining epithelium (LE) of isthmus (summer luteal phase). Azo dye method ×200

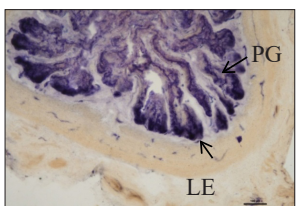


Fig. 1(E). Intense reaction in the lining epithelium (LE) and epithelium of pseudoglands (PG) of ampulla (winter luteal phase). Azo dye method ×100

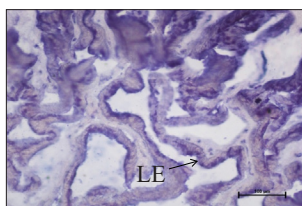


Fig. 1(F). Strong to intense reaction in the lining epithelium (LE) of Ampulla (summer luteal phase). Azo dye method ×200

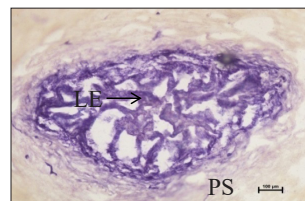


Fig. 2(E). Strong to intense reaction in the lining epithelium (LE) and weak to moderate reaction in the *propria submucosa* (PS) of isthmus (winter follicular phase). Azo dye method ×100 Strong

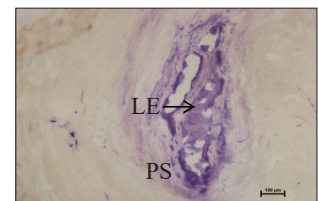


Fig. 2(F). Strong reaction in the lining epithelium (LE) and weak reaction in the *propria submucosa* (PS) of isthmus (summer follicular phase). Azo dye method ×100

Fig. 1. Localization of AKPase in Buffalo uterine tube showing Azo dye method.

Fig. 2. Localization of AKPase in buffalo uterine tube showing Azo dye method.

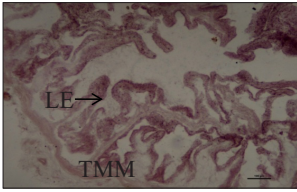


Fig. 3(A). Intense reaction in the lining epithelium (LE) and moderate to strong activity in the *tunica muscularis* (TMM) of Infundibulum (winter luteal phase). Nitro BT method x100

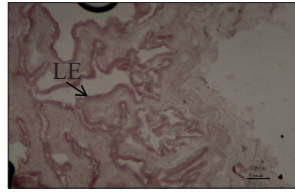


Fig. 3(B). Strong to intense reaction in the lining epithelium (LE) and reaction in the *lamina propria* of Infundibulum (summer luteal phase). Nitro BT method x100

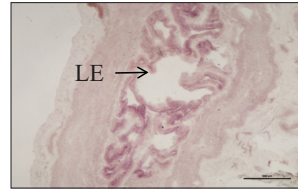


Fig 4(A). Intense reaction of SDH in the lining epithelium (LE) and moderate reaction in the *tunica muscularis* (TMM) of isthmus (winter luteal phase). Nitro BT method x40

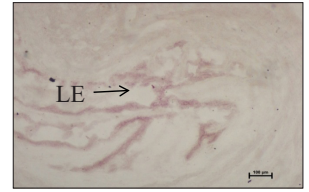


Fig. 4(B). Strong to intense reaction of SDH in the lining epithelium (LE) of isthmus (summer luteal phase). Nitro BT method x100

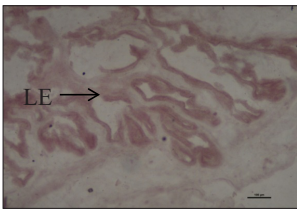


Fig. 3(C). Strong reaction in the lining epithelium (LE) of Infundibulum (winter follicular phase). Nitro BT method x100

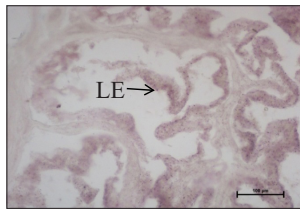


Fig. 3(D). Moderate to strong reaction in the lining epithelium (LE) of Infundibulum (summer follicular phase). Nitro BT method x200

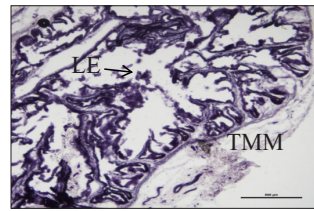


Fig. 4(C). Intense reaction of G-6-P-D in the lining epithelium (LE) and moderate to strong reaction in the *tunica muscularis* (TMM) of infundibulum (winter luteal phase). Nitro BT method x40

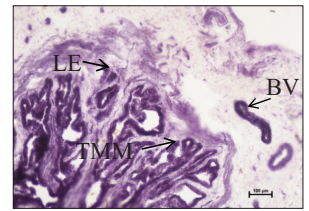


Fig. 4D. Strong to intense reaction of G-6-P-D in the lining epithelium (LE) and blood vessels (BV) and moderate to strong reaction in the *tunica muscularis* (TMM) of Infundibulum (summer luteal phase). Nitro BT method x100

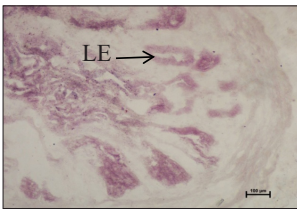


Fig. 3(E). Intense reaction in the lining epithelium (LE) and epithelium of pseudoglands of ampulla (winter luteal phase). Nitro BT method x100

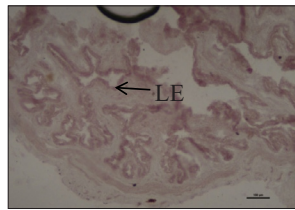


Fig. 3(F). Strong to intense reaction in the lining epithelium (LE) and epithelium of pseudoglands of ampulla (summer luteal phase). Nitro BT method x100

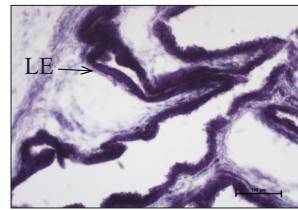


Fig. 4(E). Intense reaction of G-6-P-D in the lining epithelium (LE) of infundibulum (winter luteal phase). Nitro BT method x200

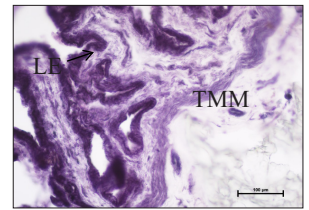


Fig. 4(F). Strong to intense reaction of G-6-P-D in the lining epithelium (LE) and moderate to strong reaction in the *tunica muscularis* (TMM) of infundibulum (summer luteal phase). Nitro BT method x200

Fig. 3. Localization of SDH in buffalo uterine tube showing Nitro BT method.

Fig. 4. A-B. Localization of SDH in buffalo uterine tube showing Nitro BT method. C-D. Localization of G-6-P-D in buffalo uterine tube showing Nitro BT method.

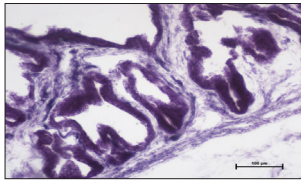


Fig. 5(A). Intense reaction in the epithelium of pseudogland of infundibulum (winter luteal phase). Nitro BT method×200

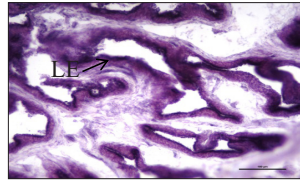


Fig. 5(B). Strong reaction in the lining epithelium (LE) of infundibulum (summer follicular phase). Nitro BT method×200

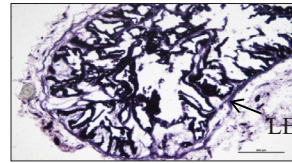


Fig 6 (A): Intense reaction in the lining epithelium (LE) of Infundibulum (winter luteal phase). Nitro BT method×100

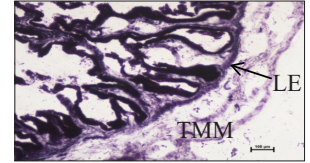


Fig 6 (B) Intense reaction in the lining epithelium (LE) and strong reaction in the *tunica muscularis* (TMM) of Infundibulum (winter luteal phase). Nitro BT method×40

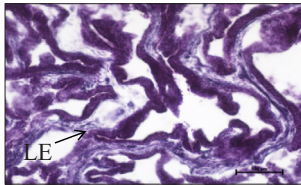


Fig. 5(C). Intense reaction in the lining epithelium (LE) of Ampulla (winter luteal phase). Nitro BT method×100

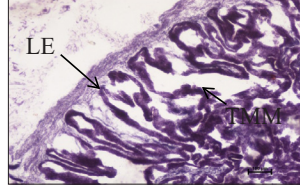


Fig. 5(D). Strong to intense reaction in the lining epithelium (LE) of Ampulla and moderate to strong reaction in the *tunica muscularis* (TMM) (summer luteal phase). Nitro BT method×200

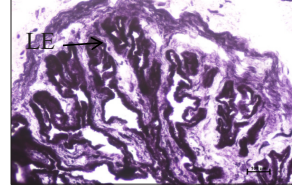


Fig 6 (C): Intense reaction in the lining epithelium (LE) and weak reaction in the lamina propria of Infundibulum (winter follicular phase). Nitro BT method×100

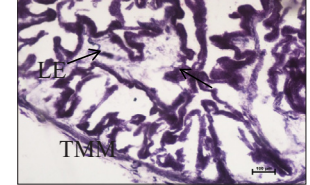


Fig 6 (D): Intense reaction in the lining epithelium (LE) and strong reaction in the *tunica muscularis* (TMM) of infundibulum (summer follicular phase). Nitro BT method×100

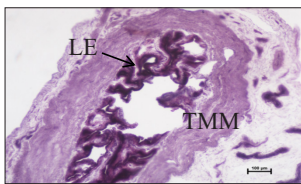


Fig. 5(E). Intense reaction in the lining epithelium (LE), blood vessels and moderate to strong reaction in the *tunica muscularis* (TMM) of Isthmus (winter luteal phase). Nitro BT method×100

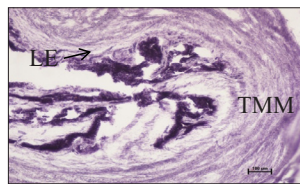


Fig. 5(F). Strong to intense reaction in the lining epithelium (LE) and moderate to strong reaction in the *tunica muscularis* (TMM) of Isthmus (summer luteal phase). Nitro BT method×100

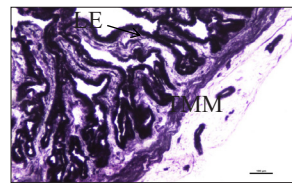


Fig 6(E): Intense reaction in the lining epithelium (LE) and strong reaction in the *tunica muscularis* (TMM) of Infundibulum (winter follicular phase). Nitro BT method×200

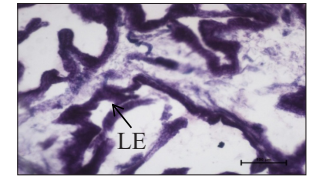


Fig 6 (F): Intense reaction in the lining epithelium (LE) of Infundibulum (summer follicular phase). Nitro BT method×200

Fig. 5. Localization of G-6-P-D in buffalo uterine tube showing Nitro BT method.

Fig 6 : Localization of NADH-d in buffalo uterine tube showing Nitro BT method

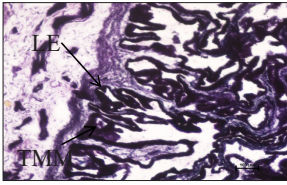


Fig 7 (A): Intense NADH reaction in the lining epithelium (LE) and strong reaction in the *tunica muscularis* (TMM) of Ampulla (winter luteal phase). Nitro BT method×200

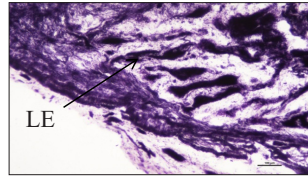


Fig 7 (B): Intense NADH reaction in the lining epithelium (LE) and strong reaction in the *tunica muscularis* (TMM) of Ampulla (summer luteal phase). Nitro BT method×200

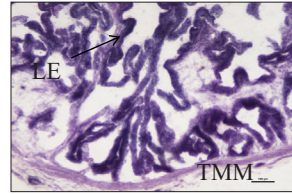


Fig 8 (A): Fig: Intense NADPH reaction in the lining epithelium (LE) and moderate to strong reaction in the *tunica muscularis* (TMM) of infundibulum (winter luteal phase). Nitro BT method×100

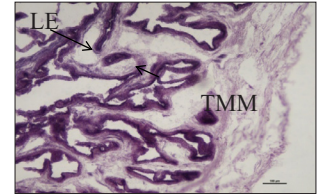


Fig 8(B): Strong to intense reaction NADPH reaction in the lining epithelium (LE) and moderate reaction in the *tunica muscularis* (TMM) of Infundibulum (summer luteal phase).Nitro BT method×100

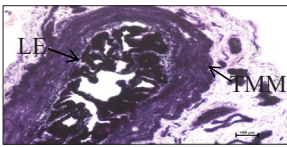


Fig. 7(C): Intense NADH reaction in the lining epithelium (LE) and strong to intense reaction in the *tunica muscularis* (TMM) of Isthmus (winter luteal phase). Nitro BT method ×100

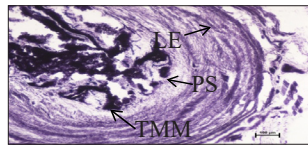


Fig 7(D) Intense NADH reaction in the lining epithelium (LE), weak reaction in the *propria submucosa* (PS) and moderate to strong reaction in the *tunica muscularis* (TMM) of Isthmus (summer luteal phase). Nitro BT method ×100

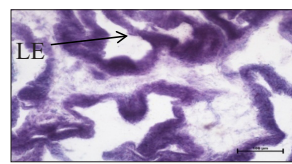


Fig 8(C). Intense reaction in the lining epithelium (LE) of infundibulum (winter luteal phase). Nitro BT method×200

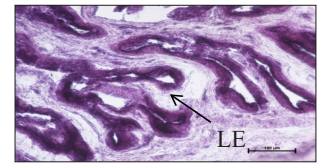


Fig 8(D). Strong to intense reaction in the lining epithelium (LE) of Infundibulum (summer luteal phase).Nitro BT method×400

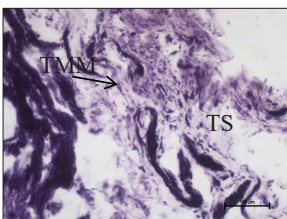


Fig. 7 (E) Strong NADH reaction in the *tunica muscularis* (TMM) of ampulla (winter follicular phase) and weak reaction in the *tunica serosa* (TS). Nitro BT method ×200

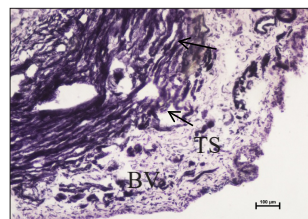


Fig. 7 (F) Strong NADH reaction in the *tunica muscularis* of isthmus (winter follicular phase) and weak reaction in the *tunica serosa* (TS). Blood vessels (BV) showing strong NADH reaction. Nitro BT method ×100

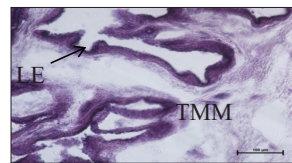


Fig 8 (E): Strong to intense reaction in the lining epithelium (LE) and moderate reaction in the *tunica muscularis* (TMM) of Infundibulum (winter follicular phase). Nitro BT method×100

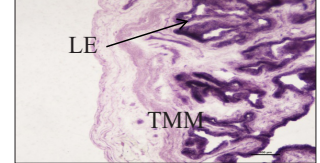


Fig 8 (F): Strong reaction in the lining epithelium (LE) and moderate reaction in the *tunica muscularis* (TMM) of Infundibulum (summer follicular phase). Nitro BT method×200

Fig. 7: Localization of NADH in buffalo uterine tube showing Nitro BT method

Fig. 8: Localization of NADPH-d in buffalo uterine tube showing Nitro BT method

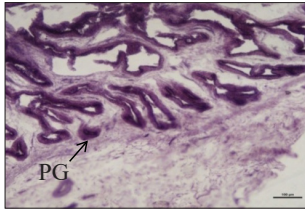


Fig 9(A): Strong to intense reaction in the epithelium of pseudoglands (PG) of Infundibulum (summer luteal phase). Nitro BT method×100

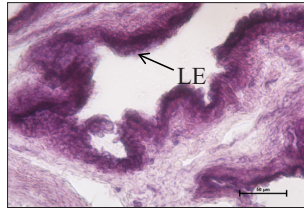


Fig 9(B): Strong reaction in the lining epithelium (LE) of Infundibulum (summer follicular phase). Nitro BT method×200

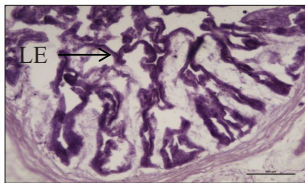


Fig 9 (C): Intense reaction in the lining epithelium (LE) and moderate reaction in the *tunica muscularis* (TMM) of ampulla (winter luteal phase). Nitro BT method×200

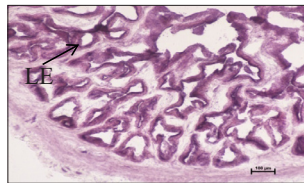


Fig 9 (D): Strong reaction in the lining epithelium (LE) and moderate reaction in the *tunica muscularis* (TMM) of ampulla (summer luteal phase). Nitro BT method×100

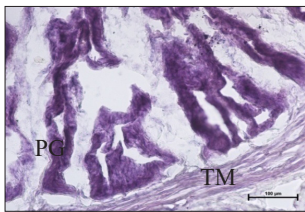


Fig 9(E): Intense reaction in the epithelium of pseudoglands (PG) and moderate reaction in the *tunica muscularis* (TM) of ampulla(winter luteal phase). Nitro BT method×200

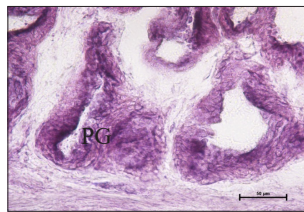


Fig 9 (F): Strong reaction in the epithelium of pseudoglands (PG) of ampulla (summer luteal phase). Nitro BT method×400

Fig 9 : Localization of NADPH-d in buffalo uterine tube showing Nitro BT method

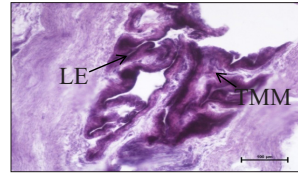


Fig 10(A): Intense reaction in the lining epithelium (LE) and moderate to strong reaction in the *tunica muscularis* (TMM) of isthmus (winter luteal phase). Nitro BT method×200

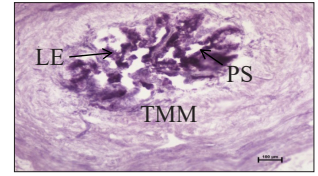


Fig 10(B): Intense reaction in the lining epithelium (LE) and moderate to strong reaction in the *propria submucosa* (PS) and *tunica muscularis* (TMM) of Isthmus (summer luteal phase). Nitro BT method×100

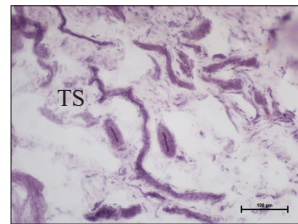


Fig. 10 (C) Weak reaction in the *tunica serosa* (TS) of infundibulum. Nitro BT method×200

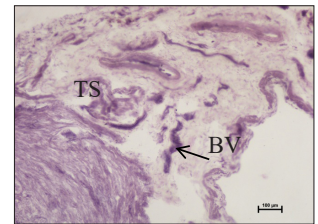


Fig.10(D). Weak reaction in the *tunica serosa* (TS) of isthmus. Blood vessels (BV) showing positive reaction Nitro BT method×100.

Fig 10: Localization of NADPH in Buffalo uterine tube showing Nitro BT method