

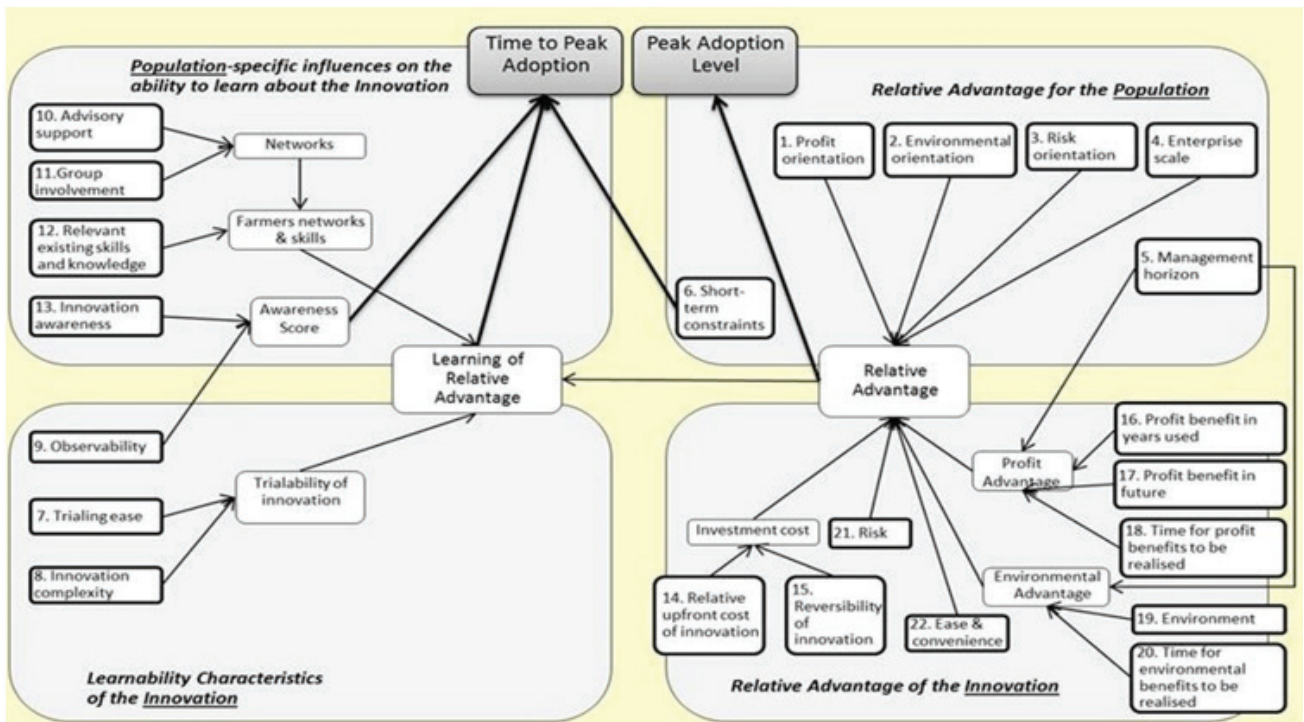


Predicting farmer’s inclination towards adoption of anionic mineral mixture in Haryana: A case study

S GOYAL¹, G SANKHALA^{2✉} and C DATT²

Division of Dairy Extension, ICAR- National Dairy Research Institute, Karnal, 132 001, India

Received: 22 October 2024; Accepted: 10 October 2025



Source: Kuehne et al. (2017)