

Environmental evaluation: A unique Decomposer in the Syrphid Family, *Syritta pipiens* L. (Diptera: Syrphidae)

***Syritta pipiens*, a widely distributed syrphid species, holds a distinctive ecological position due to its saprophagous larval habits. While most syrphid larvae are predators or plant feeders, the immature stages of *S. pipiens* utilize organically rich, decomposing substrates as developmental sites, thereby contributing to the turnover of biological waste. Adults, which rely on floral resources, act as effective pollinators and are sensitive to habitat modifications, making them valuable indicators of environmental quality. Occasional reports of this species from forensic investigations further highlight its diverse ecological associations. This article outlines the distribution, morphology, habitat selection, ecological significance, and research potential of *S. pipiens*, emphasizing its utility in ecosystem functioning, environmental assessment, and decomposition studies.**

Keywords: Biological waste, Ecosystem functioning, Nutrient cycling, Pollination, Saprophagous larvae

SYRPHIDS, commonly known as hoverflies or flower flies, comprise over 6,674 species in 284 genera. They are distributed worldwide, except in Antarctica and a few remote islands, with the majority of species occurring in tropical and temperate regions. Adults frequently visit flowers to obtain nectar and pollen, and many species exhibit mimicry of bees or wasps, which provides protection from predators (a phenomenon known as Batesian mimicry).

The family encompasses several functional groups, including saprophages, predators, filter feeders, and herbivores. Larvae belonging to the subfamily Eristalinae play an important role in processing organic residues, whereas Syrphinae larvae primarily act as predators of soft-bodied insects. *Syritta pipiens* (Linnaeus) represents a noteworthy exception within the family, as its larvae develop in organically enriched, decomposing matter. This feeding strategy makes *S. pipiens* larvae effective agents in organic matter turnover and nutrient transformation across diverse ecosystems.

S *pipiens* as a unique decomposer

Syritta pipiens, commonly known as the thick-legged hoverfly, is a cosmopolitan species distributed across multiple biogeographic regions. Its common name is derived from its distinctly thick hind femur (Fig. 1b). Adults are fast and agile fliers, while the larvae develop in wet, decaying organic matter. This species is commonly found in farmland, gardens, and urban parks, particularly in areas with abundant flowering plants.

Distribution and habitat

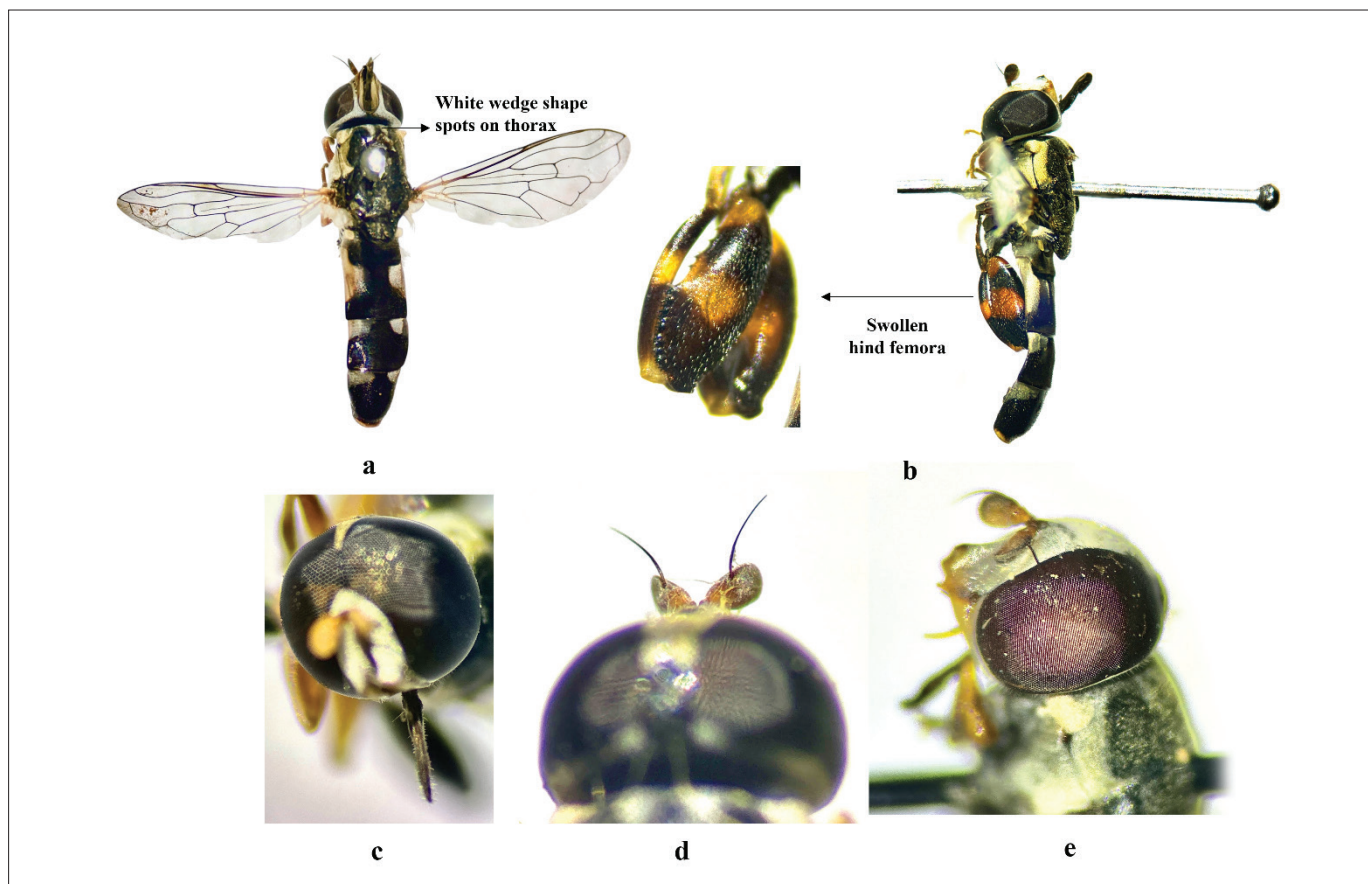
Syritta pipiens has been recorded throughout North America and Asia following its introduction from Europe in the 1800s. In Ontario, this hoverfly is active from mid-April to mid-October, whereas in Europe it is typically observed from March to November; in warmer regions of southern Europe, it may remain active year-round.

Himachal Pradesh, located in the north-western Himalayas at elevations ranging from 350 to over 2,200 m above mean sea level, comprises diverse agro-climatic zones with distinct environmental conditions suitable for its habitation. This species has been reported from all four agro-climatic zones of Himachal Pradesh, including Nurpur, Sundernagar, Chamba, Sarahan, Solan, Manali, Theog, Kalpa, and Sharbo. Recently, it was also recorded in Lari village of Lahaul–Spiti by scientists from Dr Yashwant Singh Parmar University of Horticulture and Forestry, Nauni, Solan (HP).

Morphology

Syritta pipiens is a small, robust hoverfly measuring about 6.5–9 mm in body length, with wings spanning approximately 4.25–7 mm. The hind femora are characteristically thickened and bear small spines near the tips, along with two small white wedge-shaped spots on the thorax just behind the head. The hind femur also has a moderately narrow, complete orange ring at the base.

Males exhibit holoptic eyes that meet at the top of the head, with enlarged facets between the clypeus and ocellar triangle, and a distinctly thickened third femur.



Morphological features of *Syrirta pipiens*
 a) Adult b) Broad hind femur c) Sponging mouthparts d) Aristate antenna e) Compound eyes

Both sexes display pale markings on tergites 2 and 3, along with dusted thoracic margins.

The larva is pale yellow and tapers at both ends, being widest between the 5th and 9th body segments. It narrows gradually toward the anterior end and more sharply toward the posterior. A characteristic “false head” at the posterior end helps deter predators by diverting attacks away from the true head. The body is covered with fine white hairs and bears three posterior protrusions, with the first being shortest and the third longest. It possesses seven pairs of prolegs, each tipped with approximately 24 tiny hooks.

During pupation, the larva transforms into an oval-shaped puparium, which ranges in colour from pale yellowish-white to dull brown. The three posterior protrusions remain visible, while the prolegs disappear.

Importance

Syrirta pipiens contributes to several ecological functions. Adults visit a wide range of flowering plants, including *Dianthera americana*, *Verbena urticifolia*, *Phytolacca decandra*, *Stevia rebaudiana*, and *Campanula rotundifolia*, as well as various crop species in Himachal Pradesh. Their frequent visits to flowers support pollination in both natural and agricultural ecosystems.

In Himachal Pradesh, this species has been recorded on *Lantana camara*, *Brassica campestris*, *Coriandrum sativum*, and *Triticum aestivum*. The larvae facilitate the breakdown of organic matter by enhancing fragmentation and microbial activity in decomposing substrates. Their

presence is often associated with vegetation quality and habitat stability, making them useful indicators for environmental monitoring.

Interestingly, *S. pipiens* has also been reported in forensic studies; it was recorded on human remains in Italy in a 2013 case, indicating its occasional association with decomposing organic material beyond typical substrates.

Role as a decomposer

The saprophagous larvae of *S. pipiens* utilize nutrient-rich, decomposing substrates such as agricultural residues, plant debris, and other fermented organic matter. Their feeding and burrowing activities accelerate decomposition by improving aeration and dispersing microbial communities within the substrate. This process contributes to soil enrichment and enhances nutrient availability for plant growth.

Future prospects

Syrirta pipiens offers promising avenues for future research. Detailed investigations into its interactions with microbial communities could provide valuable insights into nutrient cycling. Studies on its gut microbiota may reveal adaptations to decomposing environments, with potential applications in organic waste management. Its sensitivity to environmental changes also makes it a potential candidate for ecological monitoring programs. Expanding research in these areas can support sustainable agriculture and improved ecosystem assessment.

SUMMARY

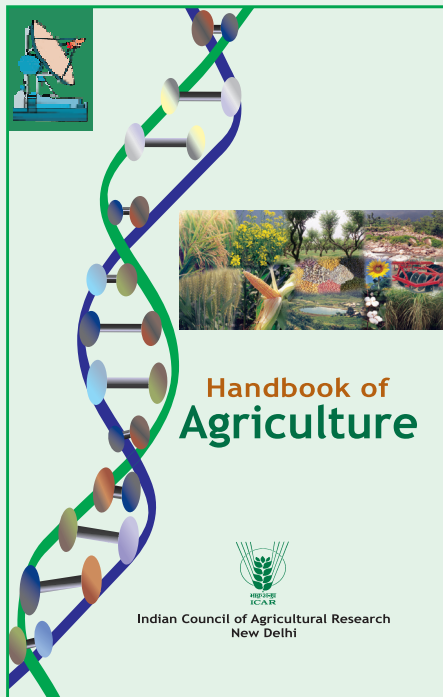
Syrirta pipiens is a widely distributed hoverfly inhabiting farmland, gardens, and other vegetated areas. Its larvae develop in moist organic matter, where they accelerate decomposition and enhance soil nutrient availability. Adults depend on floral resources and contribute to pollination in both natural and agricultural systems. The species exhibits clear sexual dimorphism, with males having enlarged hind femora and distinctive eye morphology. Larvae are well adapted to decomposing

environments through specialized structural features. Owing to its ecological roles and sensitivity to habitat conditions, *S. pipiens* holds significant potential for environmental monitoring and decomposition studies.

For further information, please write to:

Department of Entomology, Dr Yashwant Singh Parmar University of Horticulture and Forestry, Nauni, Solan, Himachal Pradesh 173 230. *Corresponding email: rohiniyspu43@gmail.com

Handbook of Agriculture



The Handbook of Agriculture is one of the most popular publication of the ICAR with a wider readership. The present edition presents science-led developments in Indian agriculture, the ongoing research efforts at the national level and with some ideas on the shape of future agriculture. While information in some chapters such as Soil and water, Land utilization, field and forage crops has been updated with latest developments, many new topics such as the Environment, agrobiodiversity, Resource conservation technologies, IPM, Pesticides residues, Seed production technologies, Energy in agriculture, informatics, Biotechnology, Intellectual Property Rights, Agricultural marketing and trading and Indigenous Technical Knowledge have been included in the present edition. For those who take intelligent interest in agriculture – and their number is increasing fast – the present edition would serve as a useful book.

TECHNICAL SPECIFICATIONS

Size	:	Royal Octavo (16 cm × 24 cm)
No. of pages	:	i-xii + 1620
Price	:	₹ 2,000
Postage	:	₹ 100
ISBN No.	:	978-81-7164-096-6

For obtaining copies:

Business Manager

Directorate of Knowledge Management in Agriculture
Krishi Anusandhan Bhavan-I, Pusa, New Delhi 110 012
Tel: 011-25843657, Fax: 09-11-25841282; E-mail: bmicar@gmail.com